



# AIMAN COLLEGE OF ARTS AND SCIENCE FOR WOMEN

Sponsored by AIMAN EDUCATION AND WELFARE SOCIETY | Affiliated to Bharathidasan University  
Recognized by UGC under section 2(f) and 12(B) | ISO 9001: 2015 Certified Institution | K.Sathanur, Tiruchirappalli - 620 021.

UNNATH BHARAT ABIYAN

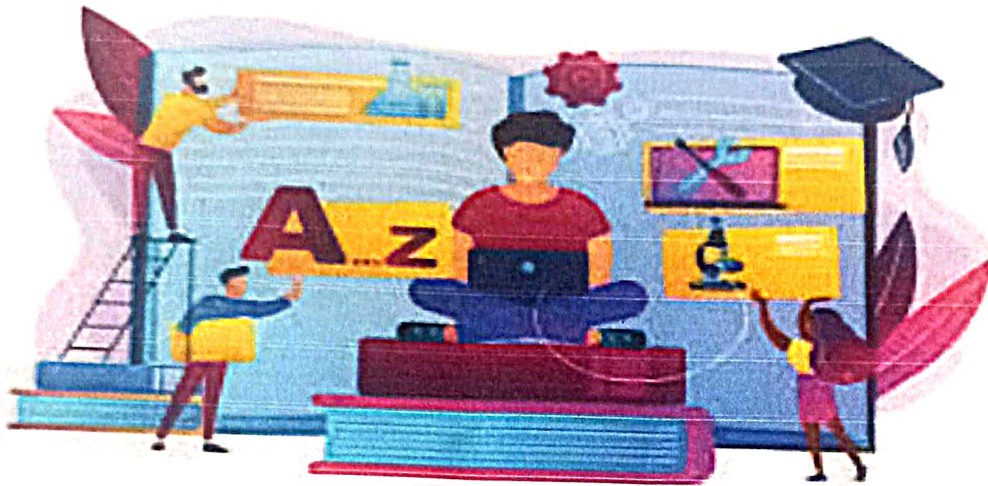
&

BHUMI CLUB



Jointly Organizes

An Awareness Program on Early Life Education and a Chalk  
Boxes Distribution Drive



Date –11.03.2025

Venue – Navalurkuttapatu  
K.Kallikudy

Dr. M. Munafur Hussaina  
Principal



# AIMAN COLLEGE OF ARTS AND SCIENCE FOR WOMEN

Sponsored by AIMAN EDUCATION AND WELFARE SOCIETY | Affiliated to Bharathidasan University  
Recognized by UGC under section 2(f) and 12(B) | ISO 9001: 2015 Certified Institution | K.Sathanur, Tiruchirappalli - 620 021.

AIMAN/Bhumi Club / 2025/ 001

## Circular

Date: 10-03-2025

This is to inform that Bhumi Club of AIMAN COLLEGE OF ARTS AND SCIENCE FOR WOMEN, Tricirappalli will conduct an **Awareness Program on Education and a Chalk Piece Distribution Drive** on 11.03.2025. The objective of the Program is to spread awareness about the significance of education, to encourage children to actively participate in learning.

*10/3/25*  
PRINCIPAL  
AIMAN COLLEGE OF ARTS AND  
SCIENCE FOR WOMEN,  
TIRUCHIRAPPALLI-620 021



# AIMAN COLLEGE OF ARTS AND SCIENCE FOR WOMEN

Sponsored by AIMAN EDUCATION AND WELFARE SOCIETY | Affiliated to Bharathidasan University  
Recognized by UGC under section 2(f) and 12(B) | ISO 9001: 2015 Certified Institution | K.Sathanur, Tiruchirappalli - 620 021.

UBA AIMAN COLLEGE in association with State Institute Of Rural Development, &  
PR; Rural Development And Panchayat Raj Department, Government Of  
Tamil Nadu, Maraimalainagar



Club Associated : Bhumi Club  
Date : 11.03.2025  
Event Venue : Navalurkuttapattu and K.Kallikudy

## Report On Awareness Program on Early Life Education and a Chalk Boxes Distribution Drive

Bhumi Club successfully conducted an Awareness Program on **Early Life Education and a Chalk Boxes Distribution Drive** in the villages of Navalurkuttapattu and Kallikudy, Trichy. The initiative aimed to highlight the importance of early life education among young minds and provide essential learning materials to children in need. The objective of the Program is to spread awareness about the significance of education, to encourage children to actively participate in learning and to distribute chalk pieces and other basic educational materials to young students. The event was held on 11.03.2025 and witnessed participation from children, and staff members. Volunteers from Bhumi Club engaged with the children through interactive sessions, storytelling, and fun learning activities. The importance of regular schooling, discipline, and perseverance was emphasized.

A key aspect of the program was the interaction with teachers from local schools. The discussions focused on:

- The current challenges students face in attending school regularly.
- The need for improved teaching aids and resources.
- Strategies to make learning more engaging for children.
- The role of parents in supporting their child's education.

Teachers shared valuable insights and appreciated Bhumi Club's efforts in encouraging students. They emphasized the importance of community support in enhancing educational opportunities for underprivileged children. As part of the initiative, chalk pieces were distributed to students to support their learning activities in schools. The Awareness on Education and Chalk Piece Distribution Drive was a great success. Bhumi Club plans to conduct similar initiatives in more villages to continue promoting education among underprivileged children.

12/3/25  
PRINCIPAL  
AIMAN COLLEGE OF ARTS AND  
SCIENCE FOR WOMEN,  
TIRUCHIRAPPALLI-620 021



## Geo Tagged Photos



PRINCIPAL  
AIMAN COLLEGE OF ARTS AND  
SCIENCE FOR WOMEN.







**AIMAN COLLEGE OF ARTS AND SCIENCE FOR WOMEN, TRICHY**

**AISHE CODE C-35778**

**Scheme:** Association with State Institute of Rural Development, & PR; Rural Development And Panchayat Raj Department, Government Of Tamil Nadu, Maraimalainagar

**Cash Voucher**

Received with thanks from UBA AIMAAN COLLEGE working in association with the State Institute Of Rural Development, & PR; Rural Development And Panchayat Raj Department, Government Of Tamil Nadu, Maraimalainagar, a sum of Rs 700 (Seven Hundred only) by cash for expenses towards travel & food expenses for the field visit to Navalurkuttapattu and Kallikudy, Trichy to organize the following activity Awareness Program on Education and a Chalk Boxes Distribution Drive.



**Signature**

Mrs.B.Farhan,

UBA Coordinator,

AIMAN COLLEGE,Trichy



**Signature Program Coordinator**



**Principal**

**PRINCIPAL**  
AIMAN COLLEGE OF ARTS AND  
SCIENCE FOR WOMEN,  
TIRUCHIRAPPALLI-620 021  
Effective Date:

Form No. OR

# AIMAN COLLEGE OF ARTS AND SCIENCE FOR WOMEN

Sponsored by AIMAN EDUCATION AND WELFARE SOCIETY | Affiliated to Bharathidasan University  
Recognized by UGC under section 2(f) and 12(B) | ISO 9001: 2015 Certified Institution | K.Sathanur, Tiruchirappalli - 620 021.

Awareness Program on Early Life Education and Chalk Boxes Distribution Drive

Participation List

Date - 11.03.2025

| S.No | Name of the Student     | Department                | Sign               |
|------|-------------------------|---------------------------|--------------------|
| 01   | A. Asma                 | Ist year B.A<br>(English) | A. Asma            |
| 02   | R. Habiba               | Ist year B.A<br>(English) | R. Habiba          |
| 03   | A. Asha Parween         | Ist year B.A<br>English   | A. Asha            |
| 04   | G. Sandhya              | Ist year B.A<br>English   | G. Sandhya         |
| 05   | S. Suwetha              | Ist year B.A<br>English.  | S. Suwetha         |
| 06   | M. Ayesha               | Ist year BA<br>English    | M. Ayesha          |
| 07   | H. Farhana              | Ist year<br>BA English    | H. Farhana         |
| 08   | S. Afreen Banu          | Ist year BA<br>English    | S. Afreen          |
| 09   | M. Aishwathime          | Ist year BA<br>English    | M. Aishwathime     |
| 10   | R. Sithi Reenas<br>Aqin | Ist year BA<br>English    | R. Sithi           |
| 11   | N. Tahima               | Ist year BA<br>English    | N. Tahima          |
| 12   | A. Shifana              | Ist year BA<br>English    | A. Shifana         |
| 13   | A. Shafya               | Ist year BA<br>English    | A. Shafya          |
| 14   | N. Ayesha Farhana       | Ist year BA<br>English    | N. Ayesha          |
| 15   | A. Tasla                | IInd. BA<br>English       | A. Tasla           |
| 16   | C. Pavithra             | "                         | C. Pavithra        |
| 17   | K. Rafiyatul Nisha      | "                         | K. Rafiyatul Nisha |
| 18   | Santhiya. S.            | "                         | Santhiya. S.       |

PRINCIPAL  
AIMAN COLLEGE OF ARTS AND  
SCIENCE FOR WOMEN,  
TIRUCHIRAPPALLI-620 021





# AIMAN COLLEGE OF ARTS AND SCIENCE FOR WOMEN

Sponsored by AIMAN EDUCATION AND WELFARE SOCIETY | Affiliated to Bharathidasan University  
Recognized by UGC under section 2(f) and 12(B) | ISO 9001: 2015 Certified Institution | K.Sathanur, Tiruchirappalli - 620 021.

|     |                      |                  |              |
|-----|----------------------|------------------|--------------|
| 19. | Fathima . J          | 2 BA .English    |              |
| 20  | Fernina began . S    | 11               | S. Fernina . |
| 21. | S. Vannithal firthas | II BA .English   |              |
| 22. | Y . Asma             | II - BA .English |              |
| 23. | M . Rosemin          | II - BA .English |              |
| 24. | A . Julfa parveen    | II - BA .English |              |
| 25. | S. Annes Fathima     | II - BA .English |              |
| 26. | S. Saijitha          | II . BA .English |              |
| 27. | M. Safiya Banu       | II - BA .English |              |
| 28. | M. Roshini Safana    | II - BA .English |              |
| 29. | M. Sana Saniya       | II - BA English  |              |
| 30. | A. Jesema Yasmin     | II - BA English  |              |
| 31. | A. Irfana            | II - BA English  |              |
| 32. | A. Neha Shauun       | II - BA English  |              |
| 33. | M. Shafan fathima    | II - BA English  |              |
| 34. | Laxinya Spears       | II - BA English  |              |
| 35. | Mufshira Safeen      | II - BA English  |              |
| 36. | Aceeralynisha M      | I - B .com       |              |
| 37  | N. Nafiqah           | I . B .com       |              |
| 38. | S. Nashira           | I . B .Com       |              |

12/3/25

PRINCIPAL  
AIMAN COLLEGE OF ARTS AND  
SCIENCE FOR WOMEN,  
TIRUCHIRAPPALLI-620 021





# AIMAN COLLEGE OF ARTS AND SCIENCE FOR WOMEN

Sponsored by AIMAN EDUCATION AND WELFARE SOCIETY | Affiliated to Bharathidasan University  
Recognized by UGC under section 2(f) and 12(B) | ISO 9001: 2015 Certified Institution | K.Sathanur, Tiruchirappalli - 620 021.

|    |                     |           |             |
|----|---------------------|-----------|-------------|
| 39 | J. Aaha Thahieru    | II - B.A  | J. Aaha     |
| 40 | H. Bahamtha Melokan | III - B.A | H. Bahamtha |
| 41 | Adhila. S           | III - BA  | Adhila. S   |
| 42 | S. Serein Fakhira   | III - BA  | S. Serein   |
| 43 | Foul Hilly.         | III - BA  | Foul.       |
| 44 | Pr. Raikana         | III - B.A | Pr. Raikana |
| 45 | M. Ayesha Siddika   | III - BA  | M. Ayesha   |
| 46 | Dasitha. M          | III - BA  | M. Dasitha  |
| 47 | S. Apein Sultana    | III - BA  | S. Apein    |
| 48 | A. Thasika Begom    | III - BA  | A. Thasika  |
| 49 | Iafana. S           | III - BA  | Iafana. S   |
| 50 | Zainab. S           | III - BA  | Zainab. S   |
| 51 | S. Raikana          | III - BA  | S. Raikana  |
| 52 | Mehataaj. I         | III BA    | Mehataaj. I |
| 53 | M. Limitha          | III BA    | M. Limitha  |
| 54 | H. Shakira Rubom    | III - BA  | H. Shakira  |
| 55 | S. Nabrin Banu      | III BA    | S. Nabrin   |
|    |                     |           |             |
|    |                     |           |             |
|    |                     |           |             |

12/3/25

PRINCIPAL  
AIMAN COLLEGE OF ARTS AND  
SCIENCE FOR WOMEN,  
TIRUCHIRAPPALLI-620 021